

A photograph of a water treatment facility, showing a long, narrow channel of water with a metal walkway in the center. The facility is surrounded by blue metal structures and pipes. The sky is overcast with clouds. The image is framed by a large purple circle.

ADVANCED WATER FILTRATION SOLUTIONS

FOR INDUSTRIAL APPLICATIONS

ENGINEERED FILTRATION.

Filtersafe

ABOUT FILTERSAFE®

Our Story

Filtersafe filters the most challenging water, making us the ideal filter for Industrial installations. Filtersafe has decades of experience filtering water for cooling towers, invasive species removal, service water, produced water, protection, and more for Municipal, Mining, Pulp & Paper, and other industrial applications.



Cooling Seawater



Mining installation in Brazil

Filtersafe® Advantages



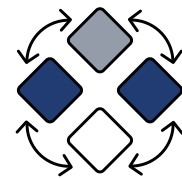
RELIABLE FILTERS

The dependable filter choice with near-zero maintenance filter options.



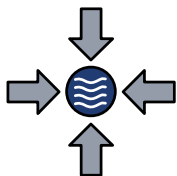
REAL ENERGY SAVINGS

Lower operating pressure capability (down to 1.6 bar) means lower ongoing energy costs.



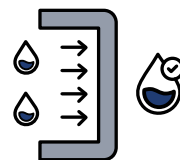
MODULAR DESIGN

Horizontal and vertical installation options that can fit your configuration.



HIGH FLOW / SMALL FOOTPRINT

Just one unit can filter up to 5,000 m³/hr, while taking up minimal space.



SUPERIOR PROTECTION

Our first-class filtration protects your system from unplanned maintenance and, when relevant, reduces the amount of secondary treatment required.



GLOBAL PRESENCE

With manufacturing facilities, offices, and support personnel located across the globe, we're there when you need us.

OUR INDUSTRIAL INSTALLATIONS CAN BE FOUND FROM THE USA TO SIBERIA TO MALAYSIA.

DOOSAN

"Filtersafe auto strainers have been installed in the Sharqiyah Desalination Plant in Oman for UF protection since 2019. The reason for choosing Filtersafe product is due to its compactness and horizontal configuration which is much easier to maintain and service. The product is also equipped with its patented technology which has proven reliable and performs efficiently to the expectation and demands of the plant."



"APT Water are very proud to be partnered with Filtersafe Automatic Screen Filtration to work on projects such as the one at Willie Creek Pearl Farm. Throughout the last year the water quality varied significantly in the tidal creek that also experienced cyclone conditions resulting in very high total suspended solids. Evidence that the Filtersafe Everclear cleaning system is a market leading design".



"Filtersafe dramatically reduced our problems. Our previous filtration system couldn't cope with our source water. The filters would have to be stopped and manually cleaned at least 5-6 times a season. Since the Filtersafe filter replaced the previous filtration system, we haven't had to open it to clean it even once. The Filtersafe filter saves us a tremendous amount of man-hours. Even downstream, where we have more filtration systems, of the previous kind, we previously had to stop and clean them 3 times a week. Now we only have to clean them once a month"



"Bloom Agro chose Filtersafe for their unique filtration technologies, that quite simply, allows their filters to work reliably and effectively in situations where other filters have not been able to. We endorse Filtersafe filters for use in applications where reliability and durability are important."



RO Membrane Protection Project



RO Membrane Protection Project



UF Pre-Treatment Desalination Project



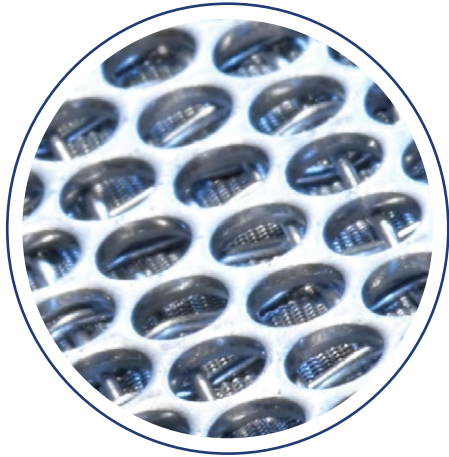
UF Membrane Protection Project



Skid mounted Cooling Tower System

FILTERSAFE® TECHNOLOGY

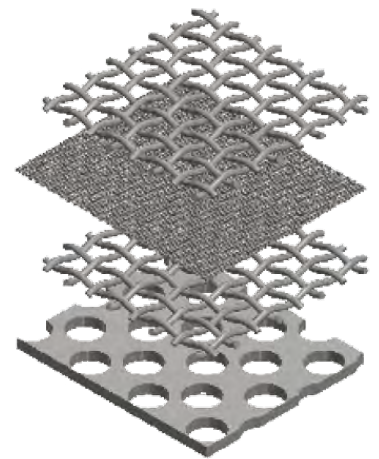
Filtersafe's automatic screen filters utilize unique, patented and cutting edge technologies to ensure the high performance demands of the market are met. Our filters utilize our own market-proven **smartweave™** filter screens and **nozzlex®** proximity suction nozzles:



smartweave™

high performance
filtration screens:

- Multi-layered sintered structure
- Enhanced strength & durability
- Filters from 10-500 microns
- Available in 316L, 904L, SMO254



nozzlex®

self-cleaning cycle for maximum
removal efficiency:

- Self balancing cleaning nozzle
- High Efficiency clean
- Zero screen wear + reduced nozzle wear
- Low pressure operation



Together they are:

EVERCLEAR™

An unparalleled automatic
filtration cycle.

WE ENGINEER FILTRATION SOLUTIONS

Engineered for challenging conditions with various upgrades available to meet your needs.

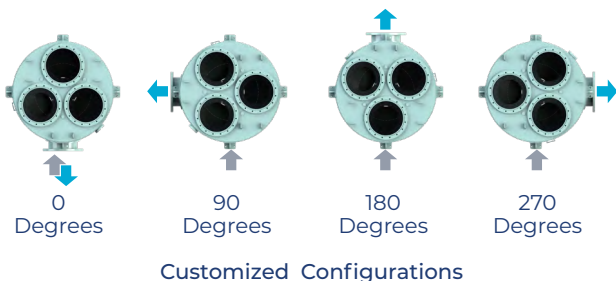
Tailored Filtration Solutions

Engineered to be the only filter your installation needs.

- Large primary filter
- Fine filtration perfect down to 10µm
- Near zero maintenance filters
- Plug & Play filters

Modular Design

We offer filters with a modular design that allows for numerous configuration options and is adaptable for any installation.



International Engineering Standards

Filtersafe can offer filters that are compliant to any international specifications or requirements, such as classification societies, or design appraisals (ASME, PED, NR13, AD2000, etc.).

Engineered for Ease of Maintenance

- Simple access to primary & main screens
- Internal design optimized for screen removal
- External screen service stand for easy maintenance (optional)

turbo™ & superturbo™

for High Sediment Loads

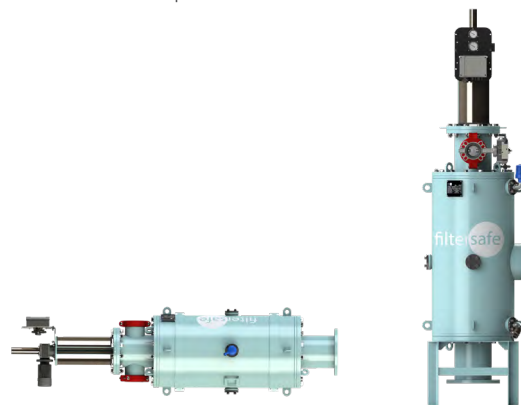
All Filtersafe® automatic screen filters can be equipped with our unique **turbo™** technology which increases the filter's capability to operate in high dirt-load situations. This unique feature gives our filters a distinct market advantage in challenging sediment-rich environments.

Custom Pressure Vessel Design & Explosion Proof Prepared

Filtersafe offers filters explosion proof prepared (Ex d or Ex ia) for up to Zone 0 hazardous area installations.

Horizontal & Vertical Configurations

Our filters can be rotated to fit your configuration needs, either for Horizontal installation to ease service & accessibility, or for Vertical installation for minimal footprint.



Horizontal Configuration

Vertical Configuration

Filtersafe FS-Series

VERTICAL & HIGH CAPACITY AUTOMATIC FILTERS

- ✓ The Largest Single Filter on the Market
- ✓ High Flow/Small Footprint
- ✓ Modular Design with Vertical & Horizontal Configurations

- ✓ Epoxy Coated Carbon Steel Construction
- ✓ Cleans While in Operation
- ✓ Upgradeable Cleaning Capacity for High Dirt Loads



2,500 m³/h
Max. Flow Rate

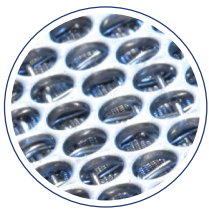
10-500 micron
Filtration Degree

100%
Screen Cleaning

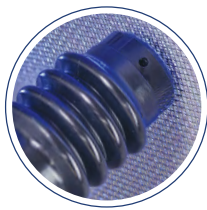
Down to **1.6 bar**
Min. Operating Pressure

Up to **50,000 cm²**
Filter Area

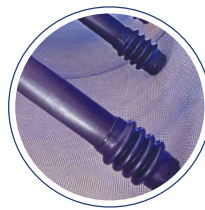
Max. Working
Temp 50°C



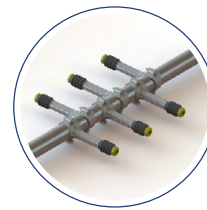
smartweave™



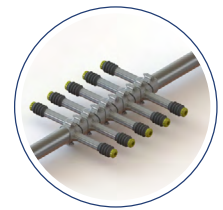
nozzlelex®



EVERCLEAR™



turbo™



superturbo™

Vertical & High-Capacity Single Screen Series | Technical Specifications:

| Model | Vertical Screen Filters | | | | | High Capacity Single Screen Filters | | |
|------------------------|-------------------------|-------------------------|-------------------------|-------------------------|-------------------------|-------------------------------------|---------------------------|---------------------------|
| | FS0031 #FS-031E | FS0061 #FS-061E | FS0101 #FS-101E | FS0151 #FS-151E | FS0201 #FS-201E | FS0300 #FS-300E | FS0400 #FS-400E | FS0500 #FS-500E |
| Inlet \ Outlet* | 2"-6" | 3"-16" | 4"-12" | 4"-14" | 4"-14" | 8"-20" | 8"-24" | 8"-24" |
| Screen Area | 3,000 cm ² | 6,000 cm ² | 10,000 cm ² | 15,000 cm ² | 20,000 cm ² | 30,000 cm ² | 40,000 cm ² | 50,000 cm ² |
| Max Capacity** | 150 m ³ /hr. | 300 m ³ /hr. | 500 m ³ /hr. | 800 m ³ /hr. | 900 m ³ /hr. | 1,500 m ³ /hr. | 2,000 m ³ /hr. | 2,500 m ³ /hr. |

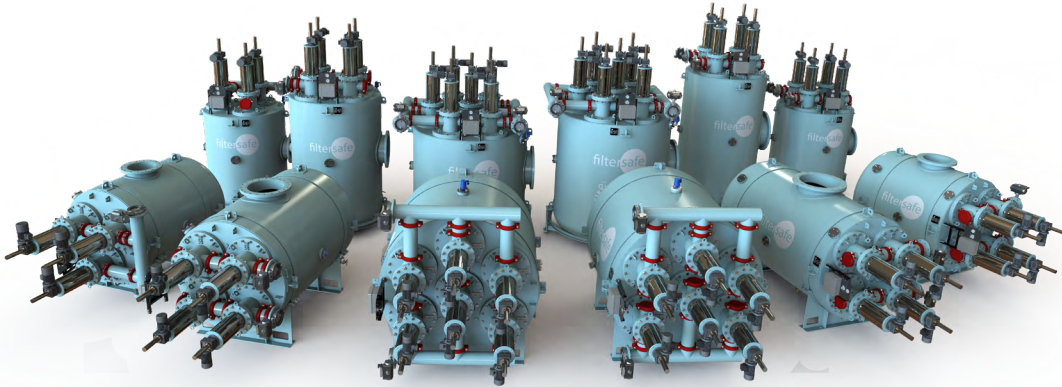
* Available in DIN PN10/16. For additional standards contact us.

** 200 µm max. flow rates. Dependent on filtration degree, water quality and inlet size. Contact us for more information.

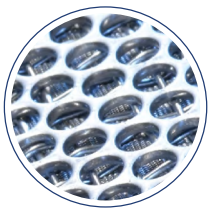
Filtersafe FS-Series

MULTI-SCREEN AUTOMATIC FILTERS

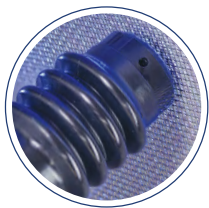
- ✓ For Large Flow Rates in Single Pressure Vessel
- ✓ Multiple Screen in Single Pressure Vessel
- ✓ Modular Design with Vertical & Horizontal Configurations
- ✓ Unique Twin-Screen Assembly Reduces Service Space Required
- ✓ Epoxy Coated Carbon Steel Construction
- ✓ Cleans While in Operation
- ✓ Upgradeable Cleaning Capacity for High Dirt Loads



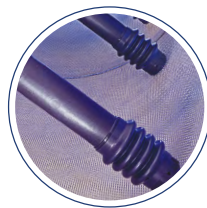
| | | |
|---|--|----------------------------------|
| 9,000 m³/h Max. Flow Rate | 10-500 µm Filtration Degree | 100% Screen Cleaning |
| Down to 1.6 bar Min. Operating Pressure | Up to 180,000 cm² Filter Area | Max. Working Temp 50°C |



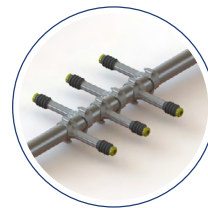
smartweave™



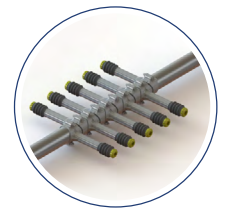
nozzlex®



EVERCLEAR™



turbo™



superturbo™

Multi Screen Series | Technical Specifications:

| Model | Multi Screen Filters | | | | | |
|------------------------|---------------------------|---------------------------|---------------------------|---------------------------|---------------------------|---------------------------|
| | FS0603 #FS-603E | FS0804 #FS-804E | FS1004 #FS-1004E | FS1204 #FS-1204E | FS1406 #FS-1406E | FS1806 #FS-1806E |
| Inlet \ Outlet* | 10"-28" | 10"-30" | 12"-32" | 12"-32" | 14"-36" | 20"-36" |
| Screen Area | 60,000 cm ² | 80,000 cm ² | 100,000 cm ² | 120,000 cm ² | 140,000 cm ² | 180,000 cm ² |
| Max Capacity** | 2,300 m ³ /hr. | 3,000 m ³ /hr. | 3,800 m ³ /hr. | 4,500 m ³ /hr. | 5,200 m ³ /hr. | 9,000 m ³ /hr. |

* Available in DIN PN10/16. For additional standards contact us.

** 200 µm max. flow rates. Dependent on filtration degree, water quality and inlet size. Contact us for more information.



OUR HEADQUARTERS

Our flagship factory. The 4,000 m² building contains our regional sales offices, R&D facilities and manufacturing and assembly plant. The facility is capable of handling very large volumes of production with an incredibly fast lead time.

ASIA

- **SINGAPORE**
fssingapore@filtersafe.net
- **CHINA**
sales@filtersafe.net

THE AMERICAS

- **BRAZIL, Rio de Janeiro**
fsbrazil@filtersafe.net
- **CHILE & PERU**
fschile@filtersafe.net
- **UNITED STATES**
fsusa@filtersafe.net

EUROPE

- **RUSSIA, EASTERN EUROPE & CIS COUNTRIES**
fsrussia@filtersafe.net

OCEANIA

- **AUSTRALIA & NEW ZEALAND**
Regional Office & Distribution Center
fsaustralia@filtersafe.net



- Filtersafe Offices
- Filtersafe Manufacturing Facilities



Filtersafe reserves the right to change any of the information presented in this document without prior notice.

The data presented in this document is for general information only and cannot be used for quotation purposes. Please contact Filtersafe for specific quote.